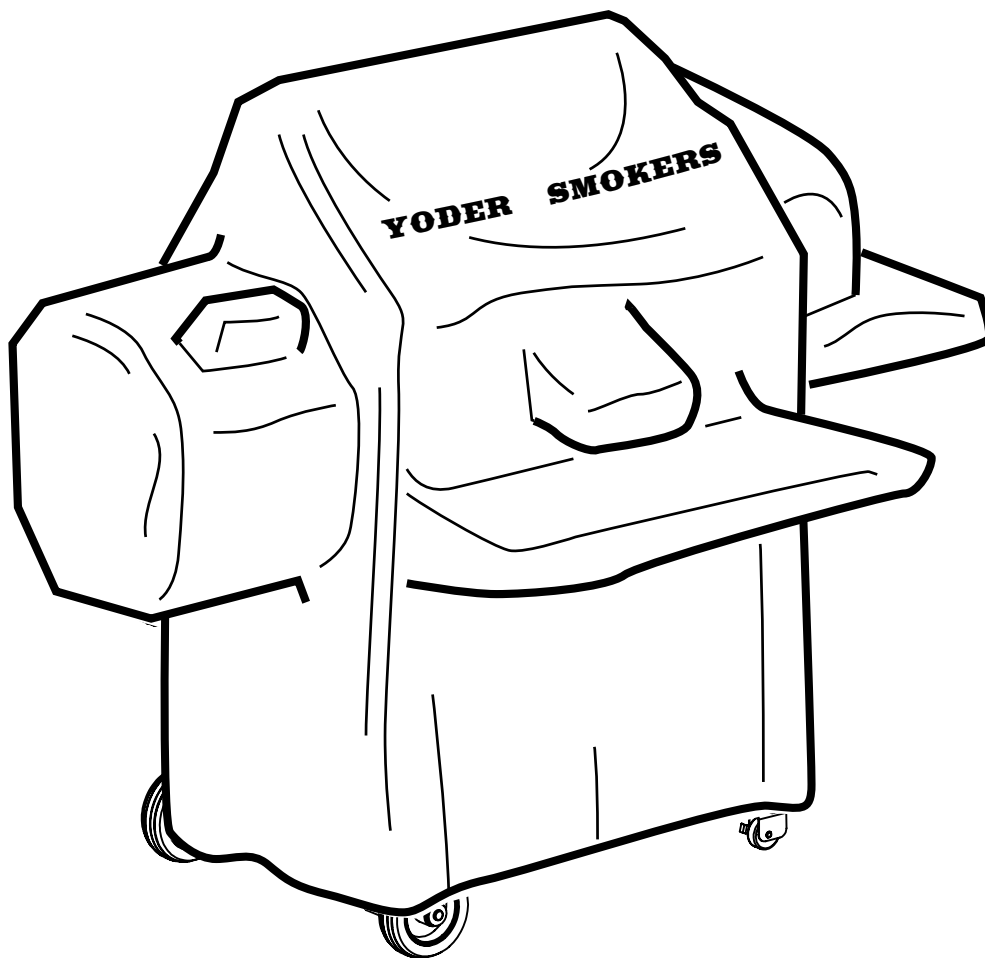


YODER ★ SMOKERS

PROCEDURE FOR COVERING PELLET SMOKER WITH
CUSTOM-FIT PROTECTIVE FABRIC COVER.



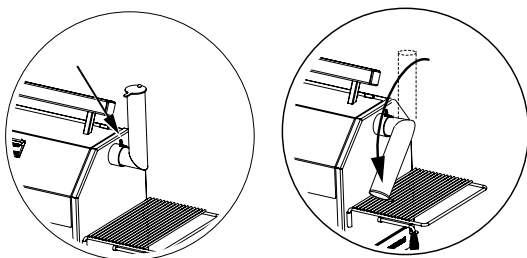
Attach your custom Yoder Smoker fabric cover as follows:

ESSENTIAL SAFETY MEASURES:

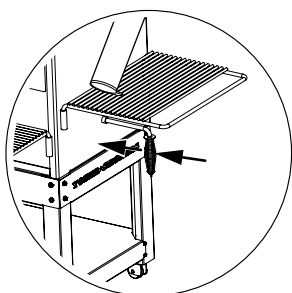
1. Disconnect the smoker from any electrical power source (wall outlet, etc.).
2. Extinguish any flames or coals that may still be burning in the smoker.
3. Allow a cool-down of the smoker until it is comfortable to the touch.

PREPARATION OF THE SMOKER UNIT:

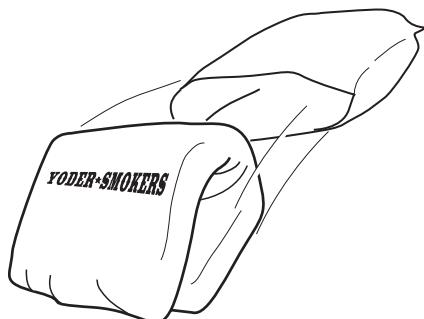
1. Loosen thumbscrew on the chimney base, then rotate the chimney forward and down to the side shelf.



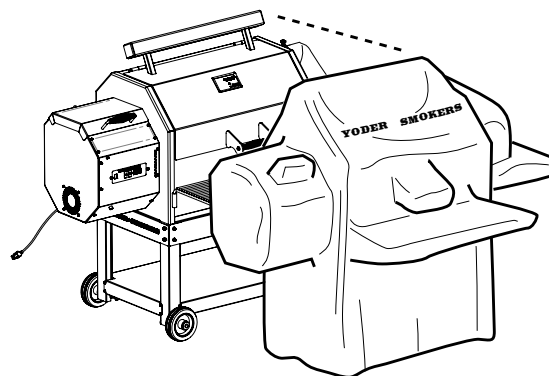
2. On smoker models equipped with a variable baffle, the handle needs to be pushed all the way in.



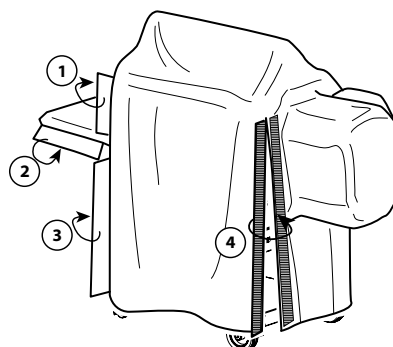
3. Smoker is now ready to be covered. Remove fabric cover from protective bag.



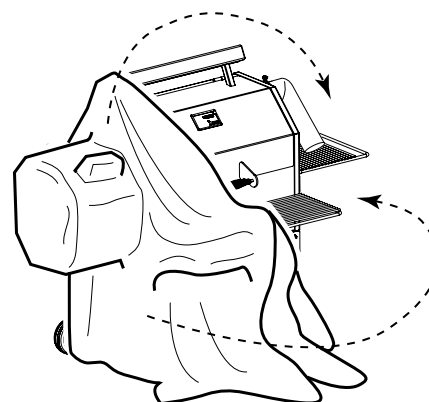
4. Unfold the fabric cover with the logo facing up. Notice that the cover is configured just like the shape of your smoker.



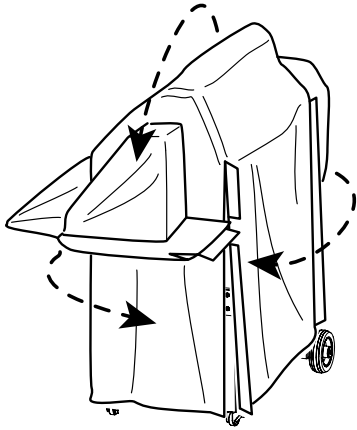
The custom cover is fitted with four hook-and-loop type flaps that are located on the back side of the cover. These must be un-hooked in order to facilitate the covering process.



5. Begin fitting the cover over your smoker from the pellet hopper end first. When hopper is completely covered, begin pulling the cover over the front shelf, and over top of the counterweight tube.



6. Continue pulling the cover over and around the smoker, ending with the chimney end.



7. With smoker fully covered, fasten all four hook-and-loop tabs to fully secure the cover.

