

# PREP AND PAINT PROCEDURE

## List of items needed:

150 grit sandpaper

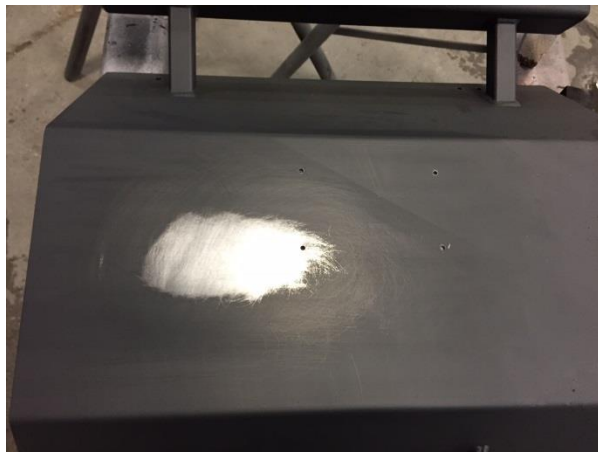
Flat black high heat stove paint

Clean towel or rag for cleanup

Citrus based cleaner or solvent

## Prepping the surface for paint

1. Wipe down the surface to clear the area of any loose paint or debris before sanding.
2. Clean the area with a citrus based cleaner or a chemical solvent to remove grease or build up.
3. Using 150grit sandpaper, sand the surface until there is a smooth transition between the painted surface and the bare metal surface. It may also be necessary to use a finer grit sand paper to get a smoother transition between surfaces.



4. Wipe the area down again with a citrus based cleaner or a chemical solvent to remove any debris from sanding. This will prepare the area for paint. Please make sure that the surface has had enough time to dry before applying paint.



## Painting the surface

Shake the can of paint vigorously for 1 minute.

Please make sure that the surfaces that are being painted are clean, and free of dust and grease. **Do not apply paint unless surface temperature is between 60-90 degrees Fahrenheit.**

Test spray onto scrap or newspaper or cardboard to start with, as it is possible that there is unmixed paint in the can - this will clear it out. Hold the can about 12-15 inches away from the surface that is being painted. Applying the paint in multiple thin coats will provide the best finish, generally two to three coats. Please allow 10-15 minutes of drying time between each coat of paint.

